

# RL series

Electrical Level Indicators



### Electro Magnetic Float Level Switches

Rapid level 'RL' Series can be single float, double float or side mounted single float types. It is specially designed to be rugged, compact and lightweight. Offering flanged and threaded mounting options. Complete range of single, double and multiple switching systems. Trouble free reed switches housed in a totally sealed unit mounted securely to the reservoir. DIN 43650 Connector as standard and IP635 rated.

#### Available features:

- **Ease of Use:** The control rod is cut to length "on site" with no special tools required
- **Variety of Applications:** The float carries no magnets and therefore can be used with a wide range of fluids
- **Electrically Safe:** No electrical contact with fluid.

### RL/G1 SERIES

- Single float type
- NPT or Flange Mount

### RL/L SERIES

- Side mounted type
- For wiring and switching circuits refer to RL/G1 series
- Distance between 1st & 2nd signal is not fixed, as the length of the control rod increases, distance between the two signals increases

### RL/G2 SERIES

- Double float type
- Each rod activates a separate switch
- Each switch can be wired with S1, S2 configuration allowing a wide variety of signal options. Reinforced control rods available for applications with turbulence
- Wiring circuits and switching option below
- RL/G2-F3-S2-S2 incorporates sealed box connector (no DIN 43650 connector)

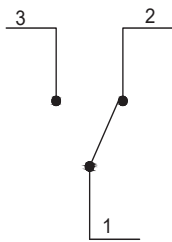
S1  
Closed in absence  
of liquid



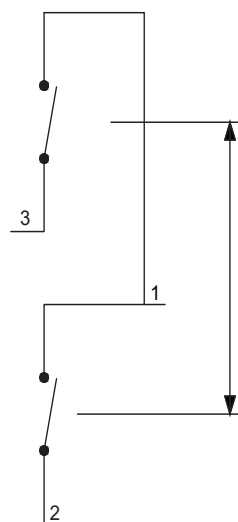
S1A  
Closed in presence  
of liquid



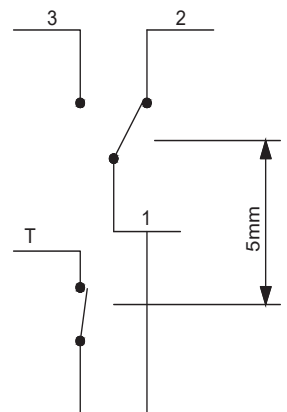
S2  
Single pole  
double throw



S3  
dual single pole  
single throw switches



S4  
dual single pole single throw  
switches with thermostat



## Specification

- Glass reinforced nylon housing
- DIN 43650 connector
- Stainless steel rod
- Delrin Float with silicone security joint
- 1" NPT Thread for single float type
- 1-1/4" NPT Thread for dual float type
- Flange (complete with gasket & screws) available for all types
- IP 65 rated

## Temperature

From -20 °F to + 210 °F

## Reed switch detail (resistive load)

S1 & S2 Type

Max. Current 3A

DC Power 60W

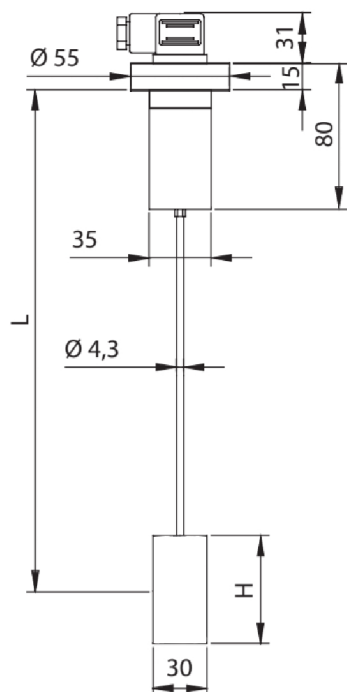
AC Power 60VA

Voltage 250V

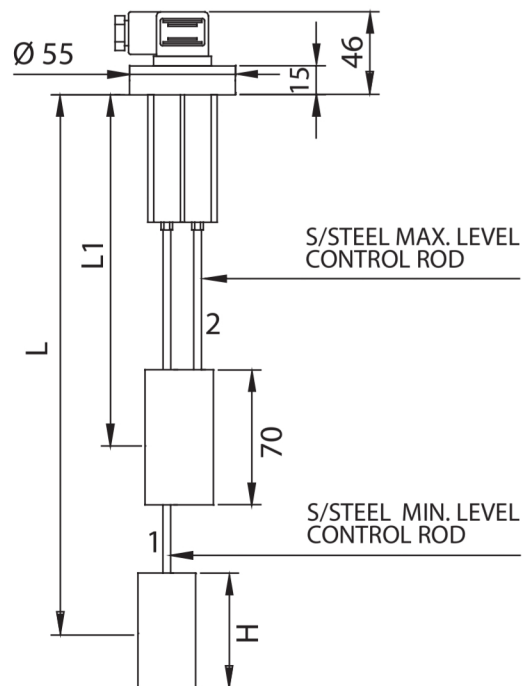
## Designation & Ordering code

RL					
<b>Series</b>		Configuration example 1 :			
<b>RL/G1</b>	One float	RL/G1	R	F3	S2
<b>RL/G2</b>	Two float	RL/G2		T3	S1A
<b>RL/L</b>	Horizontal Mount				S1
<b>Optional</b>					
<b>R</b>	Reinforced Rod				
	None				
<b>Type of Mounting</b>					
<b>F3</b>	Flange				
<b>1</b>	1" NPT				
<b>T3</b>	1 1/4" NPT				
<b>Wiring Scheme</b>					
<b>Note:</b> Upper float RL-G2 only					
<b>S1</b>	closed contact in the absence of liquid				
<b>S2</b>					
<b>S1A</b>	open contact in the absence of liquid				
<b>Wiring Scheme</b>					
<b>Note:</b> Upper float RL-G2 only					
<b>S1</b>	closed contact in the absence of liquid				
<b>S2</b>					
<b>S1A</b>	open contact in the absence of liquid				

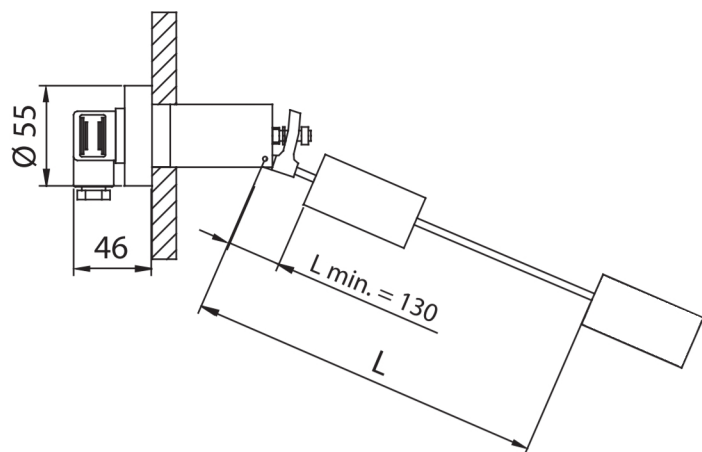
RL/G-1



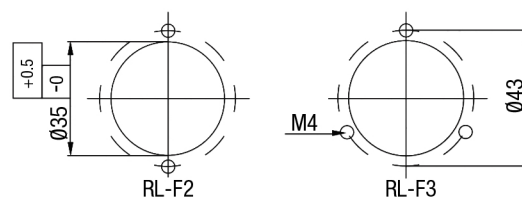
RL/G-2



RL/L



Holes on the tank





## Connection rod cutting table

CONTROL VALUE L= (mm)	ROD CUTTING FOR MIN. LEVEL A= (mm)	CONTROL VALUE L1= (mm)	ROD CUTTING FOR MAX. LEVEL B= (mm)
90	116 H= 35		
100	116 H= 45		
110	116 H= 55		
120	116		
140	137		
160	158		
180	179	90	62 H1= 35
200	200	100	62 H1= 45
220	221	120	131
240	242	140	152
260	263	160	173
280	284	180	194
300	305	200	215
320	326	220	236
340	347	240	257
360	368	260	278
380	389	280	299
400	410	300	320
420	431	320	341
440	452	340	362
460	473	360	383
480	494	380	404
500	515	400	425
520	511	420	421
540	532	440	442
560	553	460	463
580	574	480	484
600	595	500	505
620	616	520	526
640	637	540	547
660	658	560	568
680	679	580	589
700	700	600	610
720	721	620	631
740	742	640	652
760	763	660	673
780	784	680	694
800	805	700	715
820	826	720	736
840	847	740	757
860	868	760	778
880	889	780	799
900	910	800	820
920	931	820	841
940	952	840	862
960	973	860	883
980	994	880	904
1000	1015	900	925

L-L1 = 100 mm

A-B = 90 mm

H = 35 (L = 90 mm)

H = 45 (L = 100 mm)

H = 55 (L = 110 mm)

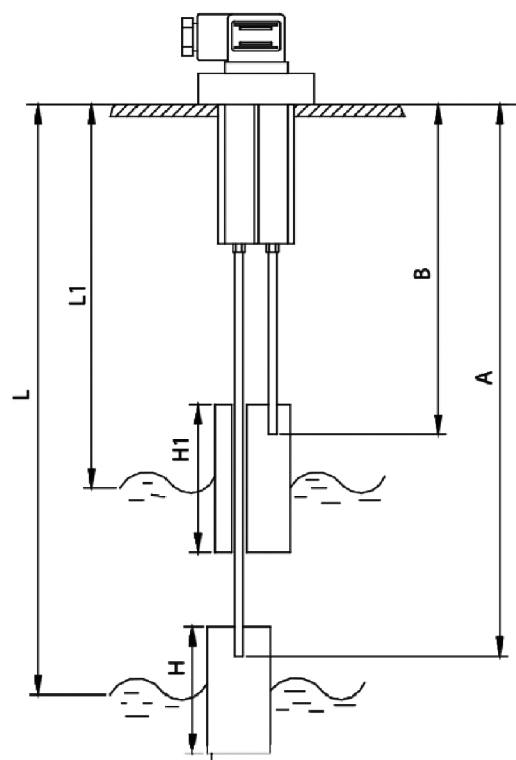
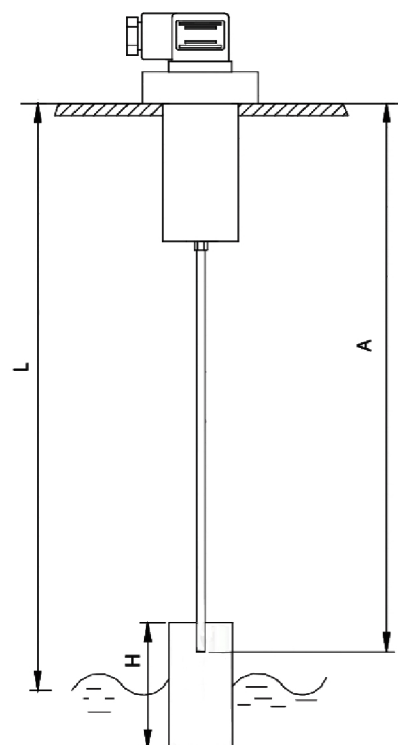
H = 60 (L = 120 - 500 mm)

H = 90 (L = 501 - 1000 mm)

H1 = 35 (L1 = 90)

H1 = 45 (L1 = 100)

H1 = 70 (L1 = 120 - 1000 mm)





## WORLDWIDE NETWORK

### HEADQUARTERS

**MP Filtri S.p.A.**  
Pessano con Bornago  
Milano - Italy  
+39 02 957031  
sales@mpfiltri.it

### BRANCH OFFICES

**ITALFILTRI LLC**  
Moscow - Russia  
+7 (495) 220 94 60  
mpfiltrirussia@yahoo.com

**MP Filtri Canada Inc.**  
Concord, Ontario - Canada  
+1 905 303 1369  
sales@mpfiltricanada.com

**MP Filtri France SAS**  
Villeneuve la Garenne  
France  
+33 (0)1 40 86 47 00  
sales@mpfiltrifrance.com

**MP Filtri Germany GmbH**  
St. Ingbert - Germany  
+49 (0) 6894 95652-0  
sales@mpfiltri.de

**MP Filtri India Pvt. Ltd.**  
Bangalore - India  
+91 80 4147 7444 / +91 80 4146 1444  
sales@mpfiltri.co.in

**MP Filtri (Shanghai) Co., Ltd.**  
Shanghai - Minhang District - China  
+86 21 58919916 116  
sales@mpfiltrishanghai.com

**MP Filtri U.K. Ltd.**  
Bourton on the Water  
Gloucestershire - United Kingdom  
+44 (0) 1451 822 522  
sales@mpfiltri.co.uk

**MP Filtri U.S.A. Inc.**  
Quakertown, PA - U.S.A.  
+1 215 529 1300  
sales@mpfiltriusa.com

## PASSION TO PERFORM



mpfiltri.com