

Quick-start Guide



View Software

The purpose of this guide is to introduce the CMP View Software and help you install, update and get up and running with the latest version as well as navigate the user interface. Designed in-house by MP Filtri, the software has been specially designed to help you make the most of your Contamination Monitoring Products.

REQUIREMENTS

System requirements

CMP View is designed to run on Windows 7 and above

Disk Space required

CMP View requires a minimum of 1GB

DOWNLOADING

Data Key

New CMP Products contain a datastick with the software

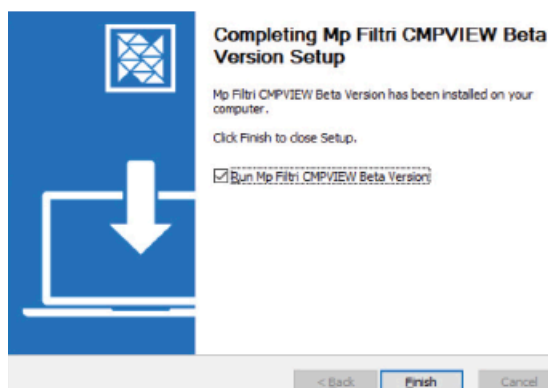
Direct download

You can download the latest version of the software at:
<https://www.mpfiltri.com/>

INSTALLATION

Setting up

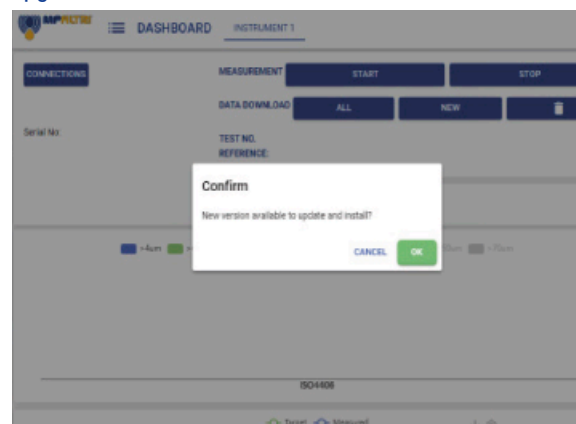
Double click on the new software and select where you want the file to be installed. Select the box marked 'Run MP Filtri CMPVIEW and press on the finish button



UPDATING

Keeping the software up to date

Whenever you load the new software it will autodetect the version you are using and give you the option to upgrade to the latest version.



UNINSTALLING

Removing the software

Select Start / Control Panel. Double-click the Add / Remove programs icon. Select 'CMPVIEW' from the list of installed programs and click the Add/Remove button.

The uninstaller should start and offer to remove the CMPVIEW software. Follow the onscreen instructions and the software will be removed.

SUPPORT MATERIALS

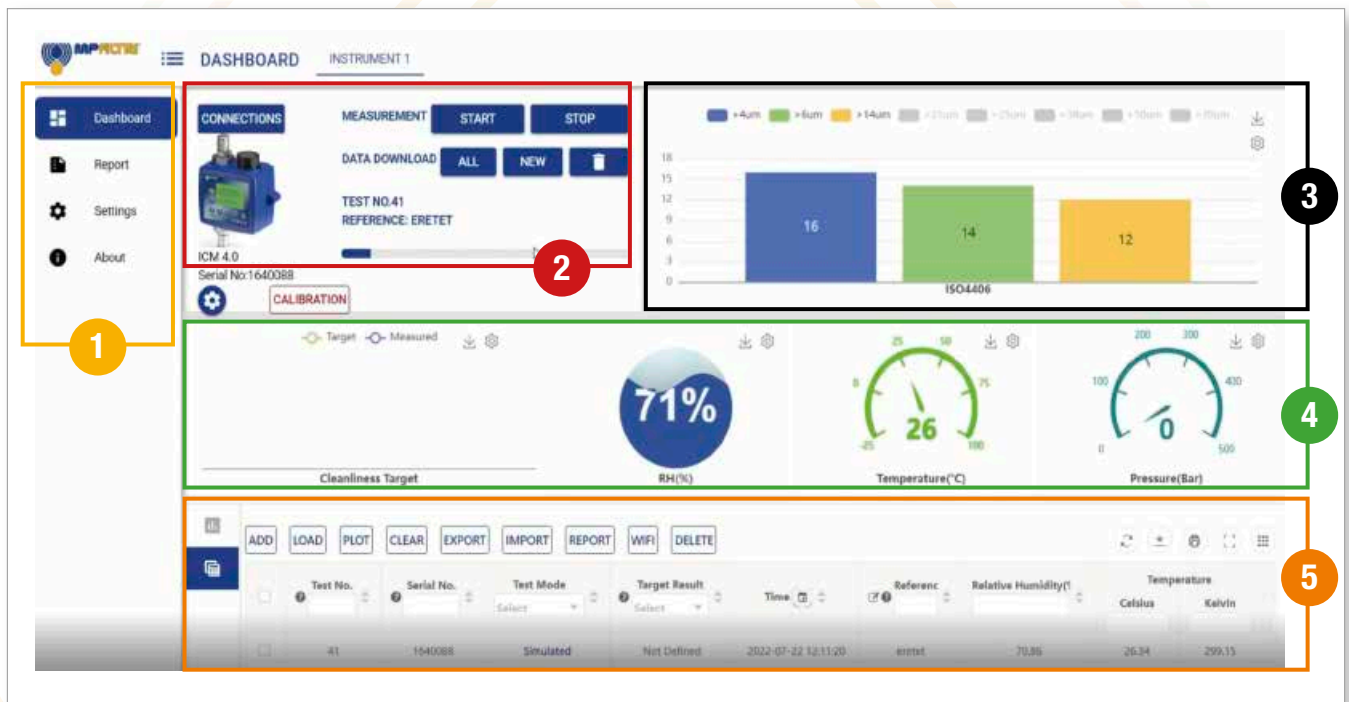
Online Tutorials

Step-by-step video guides to all the key functions of the software are available online at our website 24/7 taking you through each key task.

The tutorials are short, simple and easy to follow and are available to view at: <https://www.mpfiltri.com/>



At-a-glance guide to the CMP VIEW Interface



1 Sidebar menu

This menu enables operators to tab between the dashboard window with its comprehensive results and analysis as well as the reports, settings and software information windows.

2 Control instruments window

This shows the device you currently have connected and the options for measuring and downloading data, as well as changing instrument settings.

3 Cleanliness display graph

Delivers real-time cleanliness information in a graphical format. Operators can choose up to eight channels of measurement.

4 Results and Target display

The left screen allows you to display your current cleanliness target, while the three circular results windows provide real-time performance information on Relative Humidity, Temperature and Pressure.

5 Data window

Allows the manipulation and trend monitoring of stored data, selection of specific data results, and the loading, clearing and erasing of data.

6 The Reports Tab



Saved lists window

Open, clone or delete existing reports

Editing window

Add, remove or edit data, save or print reports.

Enables operators to create reports for both historic and current data. Results can be saved in different formats such as pdf, or printed hard copy. Reports which are no longer needed can be cleared, or even deleted from this Tab.