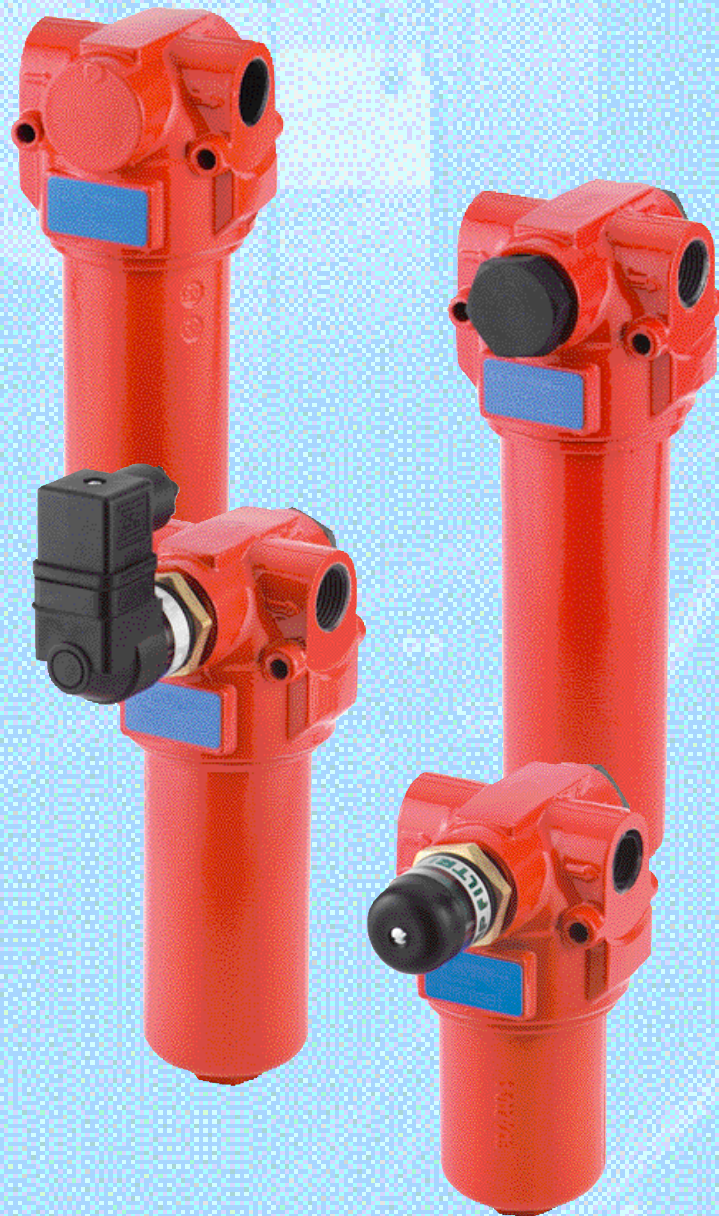
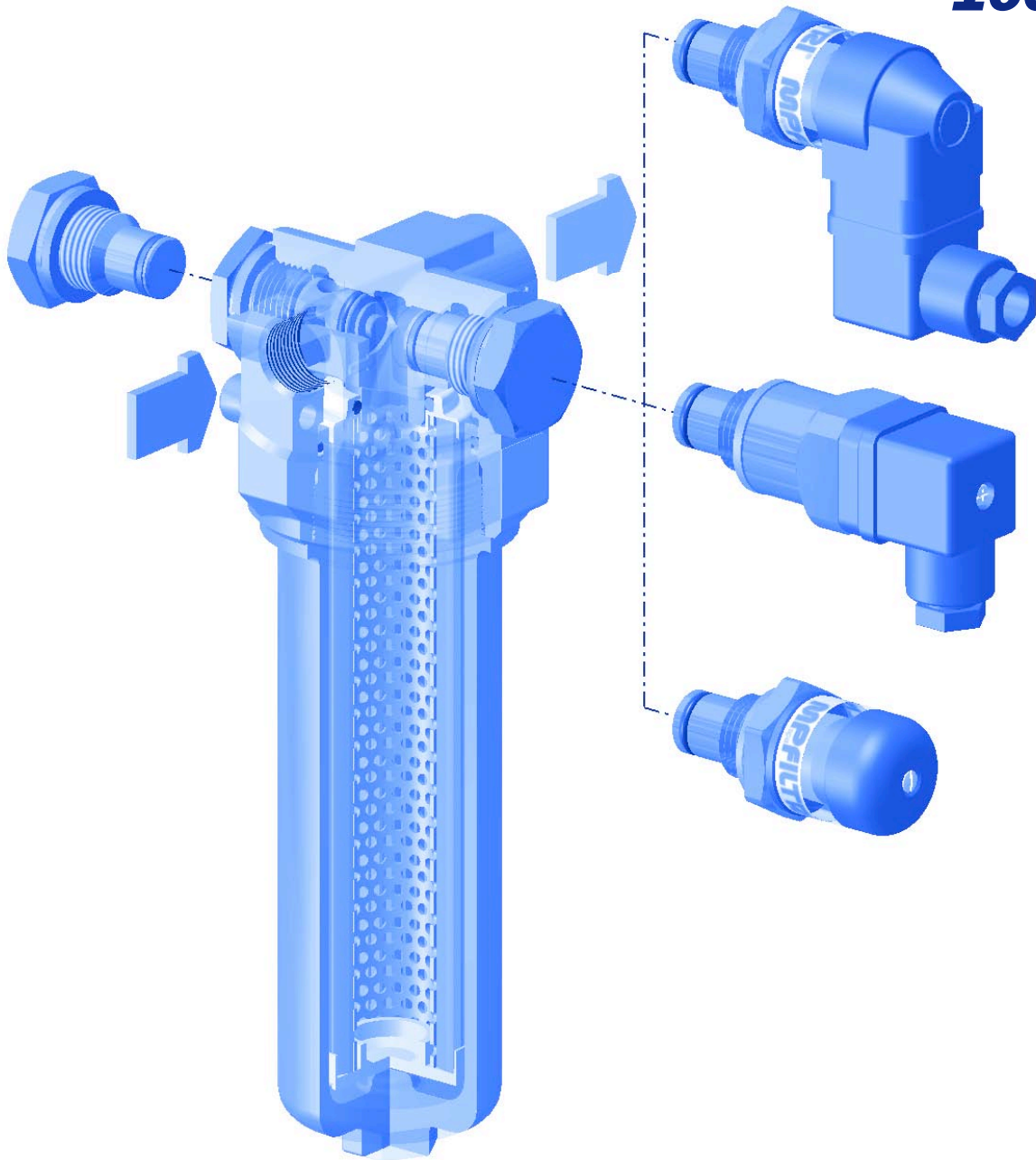


# FMP 038

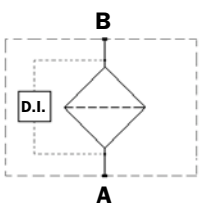


# SERIES FMP038

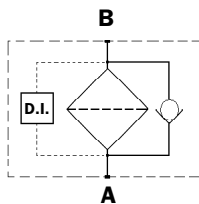
Working pressure  
**1600 psi**



Style S



Style B



# Technical data

## Filter body (Materials)

- Head: Anodized Aluminum
- Housing: Anodized Aluminum
- Bypass valve: Brass

## Pressure

- Working pressure: 1600 psi (11 MPa)
- Test pressure: 2320 psi (16 MPa)
- Burst pressure: 4790 psi (33 MPa)
- Pulsed pressure fatigue test: 1,000,000 of cycles with variable pressure from 0 to 1600 psi (11 MPa)

## Temperature

- From - 13°F to + 230°F

## Bypass valve

- Opening pressure 90 psi  $\pm$ 10%
- Other opening pressures on request.

## Elements type $\Delta p$

- Microfibre filter elements series N: 290 psi
- Stainless steel mesh elements series N: 290 psi
- Oil flow from exterior to interior.

## Seals

- Standard Nitrile (NBR) series A
- Optional FPM series V

## Weights without filter elements (lbs)

### Length

- FMP038 -1 1.8
- FMP038 -2 2.9
- FMP038 -5 2.4

## Filter internal volumes (in<sup>3</sup>)

### Length

- FMP038 -1 17.1
- FMP038 -2 26.2
- FMP038 -5 21.4

## Connections

In-line Inlet/Outlet

## Compatibility

- Bodies compatible with:  
Mineral oils to ISO 2943 - aqueous emulsions  
Synthetic fluids, water/glycol.
- Filter elements compatible with:  
Mineral oils to ISO 2943 - aqueous emulsions  
Synthetic fluids, water/glycol.
- Nitrile (NBR) seals series A, compatible with:  
Mineral oils to ISO 2943 - aqueous emulsions  
Synthetic fluids, water/glycol.
- V series FPM seals, compatible with:  
Synthetic fluids type HS-HFDR-HFDS-HFDU

## Filter Element Area

Filter element in stainless steel mesh  
Length

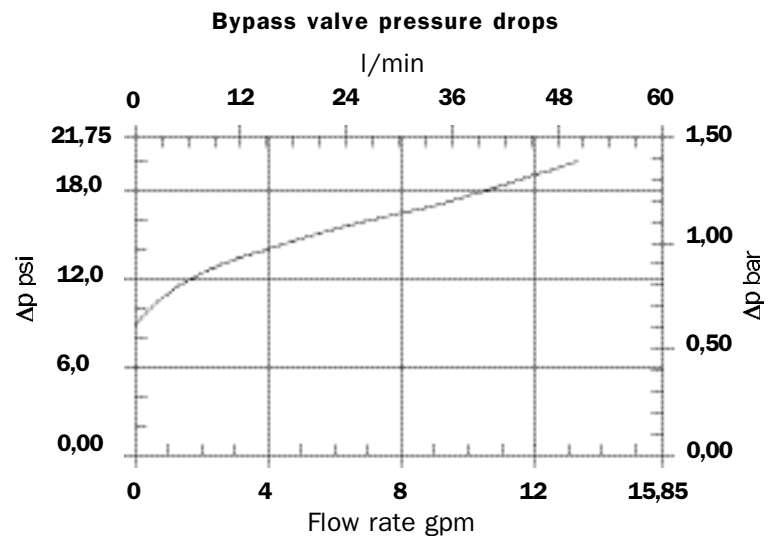
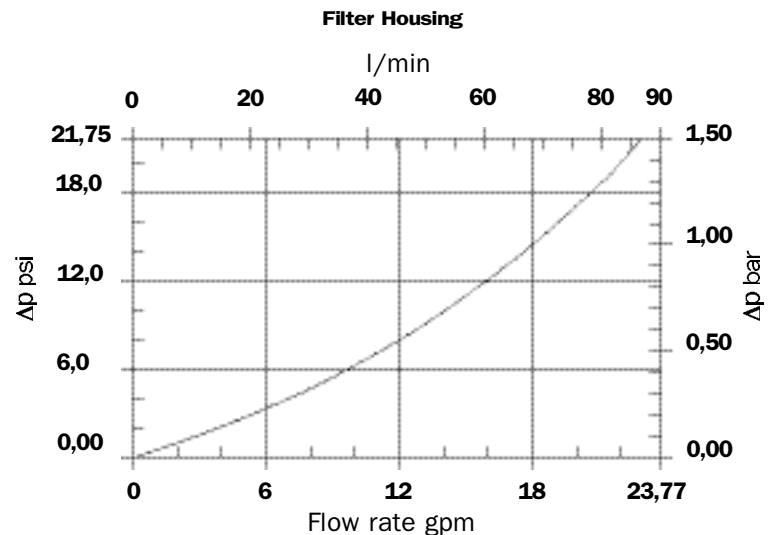
Type	1	5	2
HP037	54,3	83,4	108,5

Values in in<sup>2</sup>

## Pressure drops $\Delta p$ Body

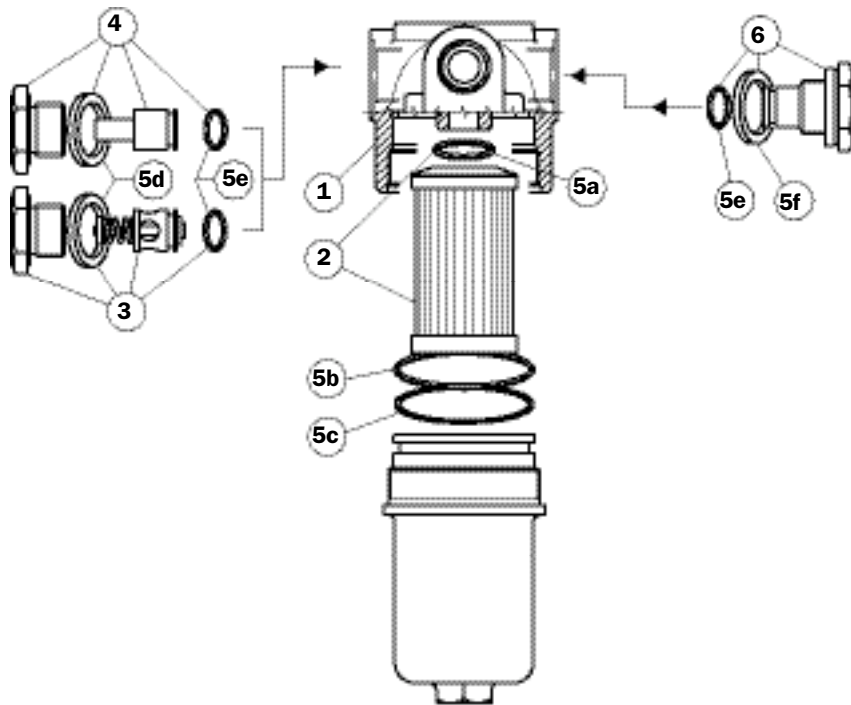
The curves are plotted using mineral oil with specific density 0,86.

$\Delta p$  varies proportional with density.





# Spare parts FMP038



Pos.	Description	Qty.	Series FMP 038 FILTER 038 1 - 5 - 2	
<b>1</b>	Complete filter	1	See order table	
<b>2</b>	Filter Element	1	See order table	
<b>3</b>	Bypass Assembly	1	02001312 (NBR) 02001385 (FPM)	
<b>4</b>	No Bypass Assembly	1	02001314 (NBR) 02001386 (FPM)	
<b>5</b>	Seal kits	1	NBR 02050310	FPM 02050311
<b>5a</b>	Filter element O-Ring	1	OR 4087 ID 859" x 139"	
<b>5b</b>	O-Ring for housing	1	OR 3200 ID 1,987" x 103"	
<b>5c</b>	Anti-extrusion ring	1	Parbak 136 ID 2,018" x 086"	
<b>5d</b>	Bonded seal	1	G 1/2"	
<b>5e</b>	O-Ring	2	OR 2050 ID 489" x 070"	
<b>5f</b>	Gasket	1	01030058 (HNBR)	01030046 (FPM)
<b>6</b>	Indicator plug	1	T2H	T2V
-	Indicator	1	See order table	

# Ordering information FMP038

## Filter assembly FMP 038

Example: FMP038

<b>1</b>	<b>2</b>	<b>3</b>	<b>4</b>	<b>5</b>	<b>6</b>	<b>7<sub>a</sub></b>
<input type="checkbox"/>	<input type="checkbox"/>	<input type="checkbox"/>	<input type="checkbox"/>	<input type="checkbox"/>	<input type="checkbox"/>	<input type="checkbox"/>
<b>2</b>	<b>B</b>	<b>A</b>	<b>G1</b>	<b>A10</b>	<b>N</b>	<b>P01</b>

## Filter element HP 037

Example: HP037

<b>1</b>	<b>5</b>	<b>3</b>	<b>6</b>	<b>7<sub>b</sub></b>
<input type="checkbox"/>	<input type="checkbox"/>	<input type="checkbox"/>	<input type="checkbox"/>	<input type="checkbox"/>
<b>2</b>	<b>A10</b>	<b>A</b>	<b>N</b>	<b>P01</b>

### 1 - Filter length

<b>1</b>
<b>5</b>
<b>2</b>

### 2 - Bypass valve

<b>B</b>	With bypass side <b>B</b>
<b>C</b>	With bypass side <b>C</b>
<b>D</b>	Without bypass with plug T2 side B
<b>E</b>	Without bypass with plug T2 side C
<b>F</b>	Without connection to bypass valve

### 3 - Seals

<b>A</b>	NBR
<b>V</b>	FPM

### 4 - Connections

<b>G1</b>	G 1/2"
<b>G2</b>	1/2" NPT
<b>G3</b>	SAE 8 (3/4" - 16 UNF)

### 5 - Filter element

<b>A03</b>	3 μ Inorganic microfibre
<b>A06</b>	6 μ Inorganic microfibre
<b>A10</b>	10 μ Inorganic microfibre
<b>A16</b>	16 μ Inorganic microfibre
<b>A25</b>	25 μ Inorganic microfibre
<b>M25</b>	Stainless steel mesh 25 m (in N style only)

β<sub>x</sub> (c) ≥ 1000  
see page 10

### 6 - Filter elements differential pressure

<b>N</b>	300 psi
----------	---------

### 7 - Options

#### a) Filter

<b>P01</b>	Threaded connection for indicator (without plug T2)
<b>P02</b>	Threaded connection for indicator (with plug T2)
<b>P03</b>	Filters without connection for indicator
<b>Pxx</b>	Customer request

#### b) Filter element

<b>P01</b>	MP Filtri standard
<b>Pxx</b>	Customer request

DIFFERENTIAL INDICATORS (see page 15)

**MP Filtri** - The filter functions described in this bulletin are valid exclusively for original MP Filtri filter elements and replacement parts. All rights reserved

The data in this publication is marketing information. MP Filtri reserves the right to make changes to the products described herein at any time it deems fit in relation to technical or commercial requirements. The colors of the products shown on the cover are for the illustration purposes only. Copyright. All rights reserved.