

Hazardous area differential clogging indicator DEH Series



PASSION TO PERFORM





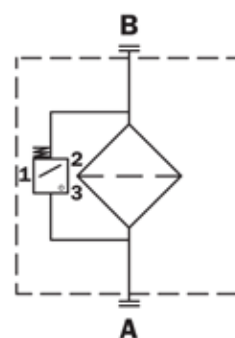
Filter elements are efficient only if their dirt holding capacity is fully exploited. This is achieved by using filter housings equipped with clogging indicators.

These devices trip when the clogging of the filter element causes an increasing in-pressure drop across the filter element.

The indicator is set to alarm before the element becomes fully clogged. This indicator will minimise the frequency of replacing filter elements as well as maximising the performance of each filter.

- Constructed from AISI 316 stainless steel
- 420 bar (6,091 PSI) maximum working pressure
- Approved for use in hazardous environments
- ATEX, IECEx, UL, CSA and TRCU EAC certified

Circuit symbol



Performance Data

- Endurance tested up to 1,000,000 cycles at max working pressure
- Burst tested at 3x maximum pressure

Current Ratings

- 24v DC 830mA
- 110v AC 180mA

Specification

- Temperature class T4 (135°C) and T6 (85°C)
- Protection grade IP66 or IP67 when used with suitable cable gland
- Indication range from 5 bar to 7 bar
- Suitable for use with all MP Filtri stainless steel pressure filters and cast iron pressure filters

Differential indicators are used on the pressure line to check the efficiency of the filter element. They measure the pressure upstream and downstream of the filter element (differential pressure).

Suitable for all MP Filtri differential indicator port connections

Environmental properties

- Suitable for use in Zone 1 Gas and Zone 21 Dust
- Maximum surface temperature: Temperature class T4 (135°C) and T6 (85°C)
- Ambient temperature range: T4 (-60°C to +120°C)
- IP 66/67/68 cable version



BUILD OPTIONS		
Cable	Protection Class	Connections
<ul style="list-style-type: none"> • 5.0m cable M20 and 1/2" NPT gland conduit options 	<ul style="list-style-type: none"> • EX ia: Intrinsically safe 	<ul style="list-style-type: none"> • 420 bar (6,091 PSI) M12 connector
<ul style="list-style-type: none"> • Contact us for more options 	<ul style="list-style-type: none"> • Ex d: Flameproof 	

Applications

- Marine
- Mining
- Petrochemical
- Offshore oil and gas
- Saw mills
- Paper mills
- Car plants
- Industrial plants
- Power generation
- Storage silos
- Hazardous environments

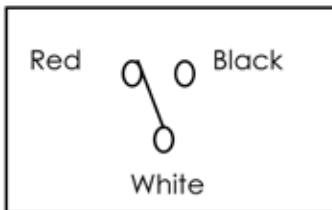


HAZARDOUS AREA DIFFERENTIAL CLOGGING INDICATOR

DEH SERIES - 5 METER CABLE INDICATOR Ex ia M20

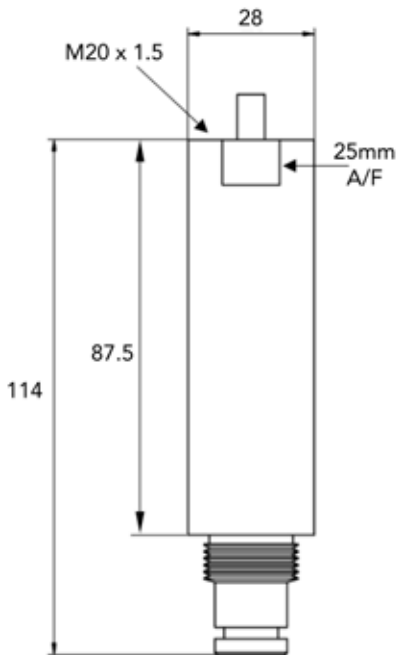


Connection diagram



Certification / Approvals

- ATEX, IECEx, TRCU, INMETRO, Ex ia IIC T4/T6
- Certification included as standard



Dimensions in mm

PROPERTIES

Housing material	AISI 316 Stainless steel
Body shape	Cylindrical
Connection type	M20 x 1.5 - 3 core polyrad cable supplied with 5 metres
Temperature range	-60°C to +125°C
Contact type	SPCO/SPDT (Hermetically sealed - volt free contacts)
Contact material	Rhodium (tungsten optional)
Dimensions	114 x 28mm
Ingress Protection	IP66 / IP67 / IP68

Electrical ratings

Ui	Li	Pi
30V	250mA	1.3W

HAZARDOUS AREA DIFFERENTIAL CLOGGING INDICATOR

DEH SERIES - 5 METER CABLE INDICATOR Ex d 1/2" NPT

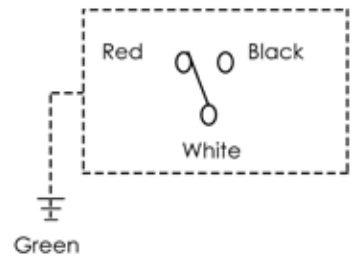


Certification / Approvals

- ATEX, IECEx, TRCU, INMETRO, Ex d IIC T4/T6
- UL/CSA Class I Division 1 Groups A-D
- UL/CSA Class II Division 1 Groups E-G
- Certification included as standard

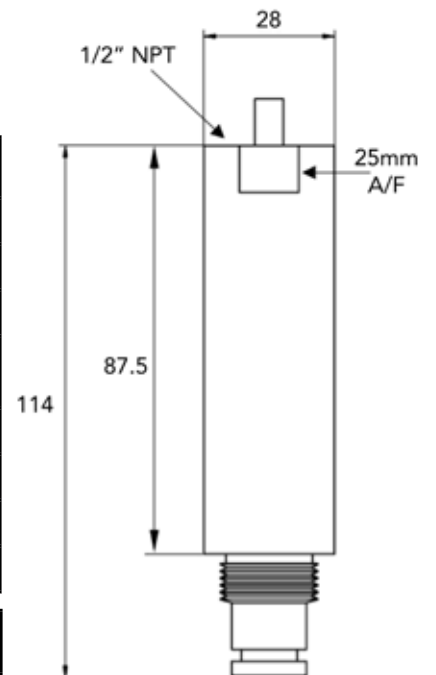


Connection diagram



PROPERTIES	
Housing material	AISI 316 Stainless steel
Body shape	Cylindrical
Connection type	1/2" NPT - 3 core polyrad cable supplied with 5 metres
Temperature range	-60°C to +120°C - ATEX, IECEx, TRCU, INMETRO -60°C to +105°C - UL/CSA
Contact type	SPCO/SPDT (Hermetically sealed - volt free contacts)
Contact material	Rhodium (tungsten optional)
Dimensions	114 x 28mm
Ingress Protection	IP66 / IP67 / IP68

Electrical ratings			
Supply Voltage	Maximum switching current	Maximum voltage	Power
24 VDC	830 mA	150 V AC/DC	20 W (VA)
110 VAC	180 mA		



Dimensions in mm

DESIGNATION AND ORDERING CODE

SERIES DE	Configuration example	DE	H	50	F	A	70	P01
PRESSURE RATING								
H = 420 BAR (6,091 PSI)								
PRESSURE SETTING								
50 = 5 BAR								
70 = 7 BAR								
* Other options available on request								
FLUID COMPATIBILITY								
F = MFQ (Fluorosilicone)								
V = FPM (Viton®)								
* Other options available on request								
KEYPAD / DISPLAY								
A = NO THERMOSTAT								
CONNECTION								
48 = M20 Ex ia								
49 = 1/2" NPT Ex d								
70 = M12 Ex ia								
VERSION								
P01= MP Filtri Standard								

Certification included as standard

EXPLORE OUR RANGE OF FILTERS

Stainless In-line filter

- FZH 010-011 maximum pressure: 700 bar (10,152 PSI)*
- FZP 039 maximum pressure: 420 bar (6,091 PSI)
- FZH 039 maximum pressure 700 bar (10,152 PSI)*
- FZP 136 maximum pressure 420 bar (6,091 PSI)

* Provided max working pressure is limited to 420 bar

Stainless Manifold mounting

- FZB 039 maximum pressure: 320 bar (4,641PSI)
- FZM 039 maximum pressure: 320 bar (4,641PSI)

Stainless Duplex pressure filter

- FZD 010 maximum pressure: 350 bar (5,076 PSI)
- FZD 021 maximum pressure: 350 bar (5,076 PSI)
- FZD 051 maximum pressure: 350 bar (5,076 PSI)

Standard High-Pressure Filters

- FHP maximum pressure: 420 bar (6,091 PSI)
- FMP maximum pressure: 110 bar/320 bar (1,595/4,641PSI)
- FMM maximum pressure: 420 bar (6,091 PSI)
- FHB maximum pressure: 320 bar (4,641PSI)
- FHM maximum pressure: 320 bar (4,641PSI)





WORLDWIDE NETWORK



HEADQUARTERS

8 BRANCHES

OVER 300 DISTRIBUTORS

Germany
France
USA
Russian Federation

China
United Kingdom
India
Canada



PASSION TO PERFORM

www.mpfiltri.com